

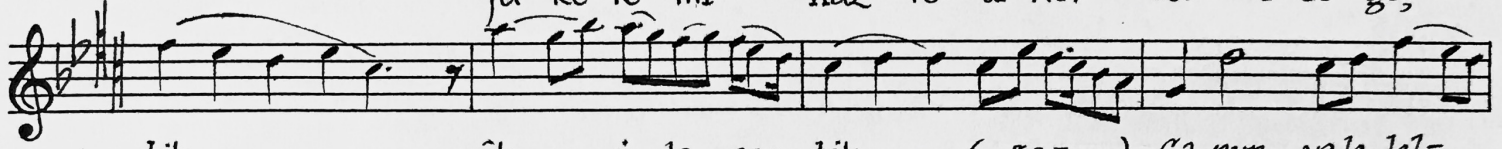
ŞEDARABAN YÜRÜKSEMÂÎ

Usûl : Yürüksemâî

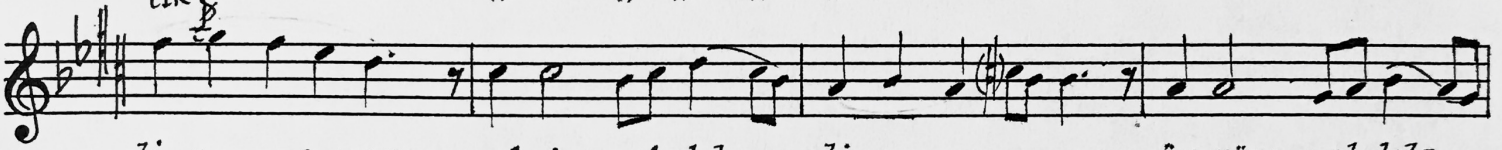
Güfte: Nâilî-i Kadîm
Beste: Toloa Bektaş



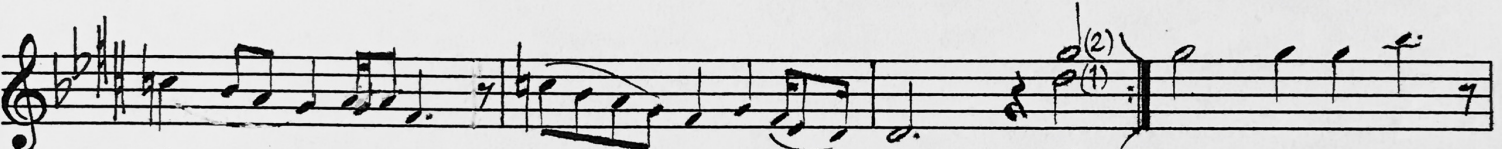
Gül- zâ rı dan ol şû hı di lâ râ i le geç-
yâ ki ne sî miz gü li râ nâ i le geç-
fu ke re mî Haz- re ti Mev lâ i le geç-



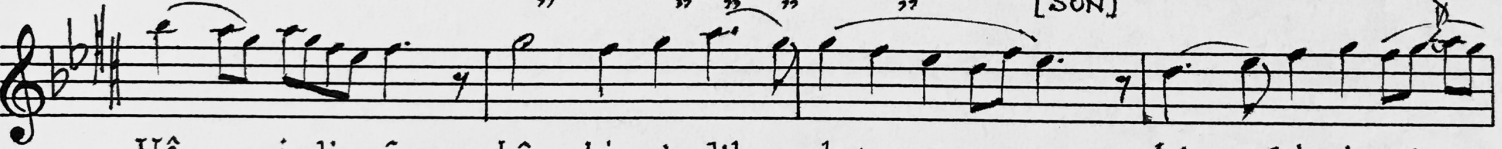
tik âh i le geç tik (saz) Ca num yele lel-
tik " " " "
tik " " " "



li a man a man mî rim yele lel li a man a man òm rûm yele lel-



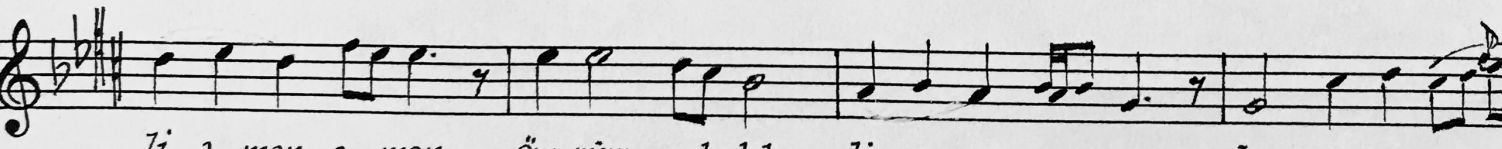
li a man a man âh i le geç tik Cû-
" " " " Nâ- ciz i gö rûp
" " " " [SON]



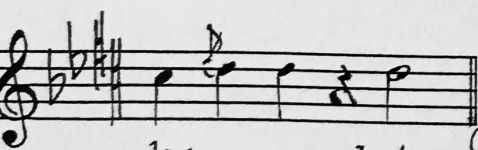
Nâ i li yâ hâ hi şî dil- den hâ hi şî dil-



den Ca num yele lel li a man mî rim yele lel



li a man a man òm rûm yele lel li a man a man ha hi şî dil-



den Lut- (BAŞA)